



19TH ANNUAL
BULL SALE
MARCH 2, 2023



THURSDAY, MARCH 2, 2023

BLUSHROSE BULL SALE

1:30 P.M. CST, AT THE FARM, UNITY, SASKATCHEWAN
21 RED, 15 BLACK & 7 FULLBLOOD SIMMENTAL BULLS

SALE DAY PHONES

Corey Bloder	306-228-1456
Alan Bloder	306-228-7056
Justin Glessman	403-363-5599
Dwayne Flasch	306-228-8899
Kim Hoffman	306-210-8308

DLMS ONLINE BIDDING

Mark Shologan, dlms.ca	780-699-5082
Jill Renton	780-603-1636

SALE CONSULTANTS

Ryan Hurlburt AUCTIONEER	306-292-9812
Kim Hoffman RINGMAN	306-210-8308
Dory Gerrard RINGMAN	403-302-1016
Garret Liebreich RINGMAN	306-815-7078

ACCOMMODATIONS

Prairie Moon Inn & Suites UNITY	866-982-9233
Armada Inn Motel UNITY	306-228-2603

INSURANCE

Stockmens Insurance will be available sale day
Larry Toner Ag Services 306-834-7652
All bulls become the risk of the purchaser as soon as the sale has commenced.

ONLINE CATALOGUE

View Catalogue Online at: dlms.ca, buyagro.com,
[Blushrose Simmental Farm facebook page](#)

BULL SELECTION SIGHT UNSEEN

If you are unable to view the offering prior to sale day, but are interested in the offering, please give Corey or Alan a call and we will personally go over which bulls we think would work in your operation. Call prior to the sale to discuss what we have to offer.

TERMS & CONDITIONS

These bulls will sell under the standard terms and conditions set forth by the Canadian Simmental Association.

100% FULLY GUARANTEED

We guarantee to provide you with a sound breeding bull. Should any bull fail to be a satisfactory breeder, he will be replaced with a bull of equal value or a credit will be given towards a purchase of another bull, or money back guarantee. If you have a problem with your purchase, please notify us immediately. It's our goal to get your cows bred in a timely manner.

DEVELOPMENT

All bulls are developed on a 14% bull pellet from New Life Mills at Clavet. Along with their TMR consisting of chopped hay, brown oats, and barley silage. The bulls are supplied with free choice onyx mineral.

HEALTH

All the bulls have been on a total herd health program, and have been vaccinated with the following vaccinations:
Ivermectin at weaning
Cyclence throughout winter
Fusogard at weaning & prior to delivery
Pyramid 5 Presponse at weaning
Fermicon 7 – Somnugen at weaning
Vitamin AD prior at weaning and in May
All bulls will be semen tested prior to the sale by a licensed Veterinarian. Sale day weights and scrotal measurements will be available prior to sale.

IN HERD SEMEN INTEREST:

Blushrose Simmental Farm reserves the right to collect semen for in herd use only, on any bull in our sale. Semen would be collected at our expense and buyers convenience at Bow Valley Genetics.

DIRECTIONS

FROM UNITY:

Travel 7 miles east on Highway 14, then 6 ½ miles north on Swarthmore Road OR travel 6 miles north on Highway 21, then 7 miles East on Wasteena Road, and a ½ mile north.



Darnell Fornwald (403) 795-8030
Shay Martindale (780) 812-4581



Corey Bloder, Alan & Heather Bloder UNITY SASKATCHEWAN
Corey 306-228-1456 / Alan 306-228-7056 / email blushrose17@gmail.com
FIND US ON FACEBOOK

Another exciting year and another group of Bulls that we are extremely proud to have assembled! One of the most endearing moments every year is the moment we put many years of planning together, and take a step back and realize all the great things you have accomplished. It's also a great time to reflect on where you could have improved. We do everything in our power to make them the very best we can and try and produce the most functional, well adapted animals that withstand the climate, environment, and cattle that go to work for you. We are in this industry because for most of us, that's all we know. It's in our blood, in our soul, and it's a beautiful sight when you finally see those cows out on grass and see how they flourish.



As I sit in the calving barn, working on this year's catalogue and reflecting on how I wanted to open this year's sale up, I think it's a great time to sit back and realize what got us here today. Without years of family, and generations in the seedstock business, and the most loyal customers (whom we call our friends,) we would defiantly not be where we are today. The amount of time that is put into raising livestock and making the industry function is truly incredible. The best way to gain confidence is to do what you are afraid to do. When people ask me why I raise livestock, I simply reply with, "it's the people, it's the animals." I'm not sure there is a more attractive way of life than this.

As we get into the sale offering, we are thrilled to showcase the group of bulls that we have compiled! They are all perfect examples of the type and kind that we have grown to love. They are a clear idea of how I like my cattle, and with the commercial operations in mind. One of the most rewarding things is to see the "diverse" group we have, whether you're in the hunt for fullbloods, reds, blacks, power bulls, or calving ease bulls, or bulls with some extra age, we can defiantly find something to work for you!

One thing that every cattle breeder in the world shares in common, is the fact that we all love to talk "cattle." I greatly urge you to call myself, dad, or anyone in the sales staff to discuss more about the offering and have a visit! We are excited to be going back to "old times" and having a Live Sale again at the farm! It's a great opportunity to catch up, and have a visit! We are more than excited to tour you through the cattle, whenever it works on your schedule and timeline. We do everything in our power to deliver every single animal in the offering to your doorstep. It's a time to learn about your program and seeing what makes your livelihood thrive!

It's not the easiest at times to do what we do, some days in the calving barn can be harsh, the weather has its challenges, a couple of harder years with a lack of rain, but resilience will always pay off. We will find new ways of dealing with these challenges, and hopefully live to see another year. I'd like to thank everyone who has helped out along the way. Mom and dad have done everything they possibly could to help out and let me follow a lifelong dream and I will be forever thankful for them. My girlfriend Ash has been a great addition to my life, she has dedicated most of her time to helping me out where ever needed! We have some great partners who have believed in me and put their trust in me with some shares on cattle, Dwayne, Kim & Rochelle, and Justin & Maris, are truly the greatest people you will ever meet and I'm excited for what the future brings! We welcome Ryan to the sales staff to auction our sale and are very excited to see what the future holds!

Consider this your personal invitation to join us on March 2, 2023 at the Farm, Unity, SK! Or join us online at DLMS.ca!

Best Regards,
Corey & Alan

EPD BREED AVERAGES 2023

CE	BW	WW	YW	MWW	MCE	MILK
7.3	3.7	76.0	111.7	66.2	3.9	28.3

DELIVERY Free delivery in Sask, AB, and MB. Other delivery options can be made to other central points. Bulls may be left at farm free of charge until April 10th. After that we ask you plan to have your purchases delivered or picked up. After April 10th, we will charge a day fee of \$5.00. All bulls staying at the farm be insured. Call to arrange other options. We will try our best to deliver your purchases directly to your yard.

US BUYERS The U.S Exchange Rate will be announced prior to sale start. We will assist in the paperwork, vet examination, health papers, branding and permits required for the state in which they are sold to. Charges of \$300 per animal will be added to the purchaser's invoice to go towards the Brokerage and U.S Custom fees. We will help to get them to the Border Crossing but ask that the purchaser covers the trucking fees once in the States. Please call prior to the sale closeout to discuss options. We will either meet you at the border crossing, or have a trucking company help with delivery of your purchase(s), the entire route.



BRSF RS FREADEY 37K

**

POLLED RED | JAN 6, 2022 | 1407029 | BRSF 37K

KUNTZ SHERIFF 8A
RST FREADEY 16F
RST DAISY 18D

BLACK GOLDWESTCOTT 59E
RUK MS REDGITTEL63G
BLUSHROSE MS BROKER 18Z

KUNTZ MARSHALL 12Y
PEACOCK'S LI'L NETTIE 23Y
SILVERLAKE BRUTE 18B
RST AVERY 19A

WFL WESTCOTT 24C
BLACK GOLD MS WHEATY 68A
MR HOC BROKER
LFE BS SHALIMAR 173X

BW	WW	YW	CE	BW	WW	YW	MWW	MCE	MILK
94	860	1405	6.8	3.3	78.3	115	63.4	2.8	24.2

HOMO POLLED. There definitely has to be one every year that starts off this whole deal, I think it was a simple task for this guy to take over the reins and get things going! Without a doubt, 37K has been a total "stud." He has that swagger since he was born, had that "bull look," and has many positive characteristics we strive to build and create. We are very proud of this group of Freadey calves, we thought that it would be a great way to start! 37K is off of a young red baldy female that seems to put it all together. She has a nice tidy udder, amazing capacity, and has really proven she can fit in just great! If you notice on the pedigree you will see our old LFE 173X cow that still roams the pastures here. She has become one of the major forces behind building our black program here. I have been very appreciative of how well this pen of bulls has become and can't wait to see where they all end up going! They are just flat out good!



BRSF 37K - LOT 01



BRSF RS FREADEY 1K

**

POLLED PUREBRED RED | JAN 1, 2022 | 1407024 | BRSF 1K

02

KUNTZ SHERIFF 8A
RST FREADEY 16F
RST DAISY 18D

NUG ROYAL RED 324A
BRSF LADY SATIN 811F
SUNNY VALLEY SATIN 105X

KUNTZ MARSHALL 12Y
PEACOCK'S LI'L NETTIE 23Y
SILVERLAKE BRUTE 18B
RST AVERY 19A

LFE BLACK LAKOTA 385W
TRIPLE C SMARTY PANTS R
SUNNY VALLEY UP-ROAR 90U
SUNNY VALLEY SATIN 22S

HOMO POLLED. There have been a few times I have been caught "puzzled" in the bull pen. 1K and 37K are so identical, it really is a toss-up between the two. They have the same strengths. If I was a commercial breeder and wanting to run paternal brothers together, this would be one of those "good idea" moments. The cow family behind him comes from the Sunny Valley program many years ago. The "Satin" bloodline has been known to be great producers and really shine no matter who they are mated to. I appreciate these red calves for their easy fleshing, spring of rib. They are extremely deep flanked, can move very well, and are the type that go out and get the work done. We have sold many sons of 16F to the most astute cattleman, there is nothing but positivity when you ask how they've worked. The first calving females off of him are outstanding and that's probably the main reason he still breeds cows at Blushrose!

BW	VW	YW	CE	BW	WW	YW	MWW	MCE	MILK
85	840	1385	8.2	1.8	73.6	111.3	64.6	4.9	27.8

Bull Selection Sight-Unseen

If you are unable to attend the sale but are interested in the offering, please give Corey or Alan a call and we will personally go over which bulls we think would work in your operation. Call prior to the sale to discuss what we have to offer.



HOMO POLLED. An absolute standout we have here! Possibly, off of the best uddered female at the farm! This guy has many attributes that I would say are a must when selecting a new herd sire. From birth, it was a no-brainer that he would be at the top of the catalogue. The testicular development on these Freadey calves is quite impressive to say the least, massive scrotal development and great fertility on the daughters of 16F. His maternal sib from the year before was an amazing female that we sold to the Hoffmans in the Source, who is also the dam of 66K who is Lot 31 and will likely be one of the leadoff black bulls! A little calving ease, but with incredible growth and get up and go, 26C's calves always come really small but compete with the more powerful pedigrees.

BRSF RS FREADEY 20K **

POLLED PUREBRED RED | JAN 3, 2022 | 1407027 | BRSF 20K

03

BRSF RS FREADEY 34K **

POLLED PUREBRED RED | JAN 5, 2022 | 1407028 | BRSF 34K

04

KUNTZ SHERIFF 8A
RST FREADEY 16F
 RST DAISY 18D

WHEATLAND BULL 356A
COLT MS 26C
 COLT'S MS ECLIPSE 35A

KUNTZ MARSHALL 12Y
 PEACOCK'S LI'L NETTIE 23Y
 SILVERLAKE BRUTE 18B
 RST AVERY 19A

WHEATLAND BULL 786T
 WHEATLAND LADY 508R
 BOUNDARY SENATOR 126W
 PRL SEAMSTRESS 813S

KUNTZ SHERIFF 8A
RST FREADEY 16F
 RST DAISY 18D

NUG RECOIL 272Y
BRSF LADY HARLOW 77E
 DIAMOND J SNAP 86W

KUNTZ MARSHALL 12Y
 PEACOCK'S LI'L NETTIE 23Y
 SILVERLAKE BRUTE 18B
 RST AVERY 19A

IPU 52N ACCELERATOR 222U
 NUG SHERRY 686S
 SFM 24R
 DIAMOND J RAMBA 109P

BW	WW	YW	CE	BW	WW	YW	MWW	MCE	MILK
78	820	1360	12.3	0.2	71.4	107.5	55.8	6.9	20.1

BW	WW	YW	CE	BW	WW	YW	MWW	MCE	MILK
88	830	1385	9.6	1.3	72.3	107.7	59.6	5.4	23.4

HOMO POLLED. This calf is a great example that you don't need the biggest cows to raise big and awesome calves. His dam 77E is a moderate framed baldy cow that goes back to the great "Recoil" bull that we used for so long from Maxwells, those cows are some of the very best red females that we have had here. A nice modest birth weight of 88 lbs on this guy and we are excited to see how he turns out one day. His full sibling just calved and just like her mother, she has a big future ahead of her. The matching baldy faces and eye appeal are some of the most wanted types of females in the purebred and commercial industries. Take a peek at this guy when you go through the bull pen. He is special in many ways and I think he is the right kind for today's industry.



lot
05



HETERO POLLED. A few years back we decided to pick up a few more bred heifers and this guy's dam was one of those. The bloodline behind this one is relatively out cross in our program, a great pedigree with the standouts of Wet Dream, and Electric Red. 14K is a bull that carries great muscle, an awesome width up top, and a great foot under him like his sire Freadey. Another bull with all the right confirmation and attributes, the Freadey calves are like peas in a pod!



BRSF 14K - LOT 05

**** BRSF RS FREADEY 14K**

05

POLLED PUREBRED RED | JAN 2, 2022 | 1407026 | BRSF 14K

KUNTZ SHERIFF 8A
RST FREADEY 16F
RST DAISY 18D

WESTGOLD RED CHIEF 136Y
KHG MARISA 24F
ZSL MISS ELECTRIC 56Z

KUNTZ MARSHALL 12Y
PEACOCK'S LI'L NETTIE 23Y
SILVERLAKE BRUTE 18B
RST AVERY 19A

NGDB WET DREAM 6W
KHG MISS GOLD 35R
KHG ELCTRIC RED 105U
ZSL MS ROCK 97U

**** BRSF RS FREADEY 90K**

06

POLLED PUREBRED RED | JAN 16, 2022 | 1407299 | BRSF 90K

KUNTZ SHERIFF 8A
RST FREADEY 16F
RST DAISY 18D

TER-RON ABSOLUTE 54D
BRSF LADY HOUSTON 849F
BRSF LADY HOUSTON 55C

KUNTZ MARSHALL 12Y
PEACOCK'S LI'L NETTIE 23Y
SILVERLAKE BRUTE 18B
RST AVERY 19A

TER-RON ABSOLUTE 447B
DEEG MS 54Y
ANCHOR D TRUE GRIT 520Y
BLUSHROSE MS TULSA 58X

BW	WW	YW	CE	BW	WW	YW	MWW	MCE	MILK	BW	WW	YW	CE	BW	WW	YW	MWW	MCE	MILK
96	815	1405	7.8	3.1	75	114.8	66	4.8	28.5	91	805	1290	7.9	2.7	76.9	115.9	68.1	4.7	29.6

HETERO POLLED. Maternal strengths are one thing that we think are really important when it comes to running a cowherd. 90K's cow family has been one of our favourites for many generations. His momma cranked out a \$30,000 bull 2 years ago that is known by the name "Cash," on her first go! This guy's great grandma 58X continues to produce at the ripe age of 13, she calves on the first cycle every single year! The best part about 90K's pedigree is the abundance of proven bloodlines that have worked so well for us. A Freadey son and back to Absolute and a splash of Fullblood with True Grit. He is above average in every EPD category there is, added with his moderate frame build, he is sure to be a great prospect for aspiring bull buyers!



BRSF 849F - DAM OF LOT 06



lot
06

lot
07



HOMO POLLED. If colour and hair is something you're looking for, this one might be up on your list to choose from. Again, a Freadey who is likely one of the softest made individuals in the pen. He had one of the highest weaning weights of the pen, and likely can cover a lot of cows this spring or summer. His dam strays from the great Tori cow family again, I feel like I talk about them too often, but every year, offspring and progeny are scattered throughout the catalogue from him! A great hint of Recoil on the bottom, the mix and formula behind this one is truly something special. Great example of what those old walking bulls really did. You don't realize how good they are until the daughters start cranking them out!

07. BRSF RS FREADEY 11K **
POLLED PUREBRED RED | JAN 1, 2022 | 1407025 | BRSF 11K

<p>KUNTZ SHERIFF 8A RST FREADEY 16F RST DAISY 18D</p> <p>NUG RECOIL 272Y BRSF LADY TORI 74C BRSF MS BLUSHROSE 30Z</p>	<p>KUNTZ MARSHALL 12Y PEACOCK'S LI'L NETTIE 23Y SILVERLAKE BRUTE 18B RST AVERY 19A</p> <p>IPU 52N ACCELERATOR 222U NUG SHERRY 686S MUIRHEADS STOUT 105X BLUSHROSE MS TORILANE 26T</p>
---	---

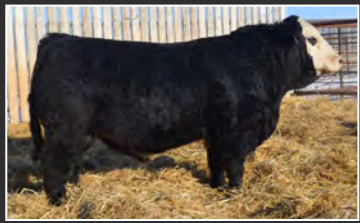
BW	WW	YW	CE	BW	WW	YW	MWW	MCE	MILK
91	905	1305	6.6	3.1	77.7	116.9	66.2	2.6	27.3

08. BRSF RS FREADEY 53K **
POLLED PUREBRED RED | JAN 7, 2022 | 1407031 | BRSF 53K

<p>KUNTZ SHERIFF 8A RST FREADEY 16F RST DAISY 18D</p> <p>BARCLMR36B RUK MS RED DENICE 45D ACPA BLACK DREAM 2T</p>	<p>KUNTZ MARSHALL 12Y PEACOCK'S LI'L NETTIE 23Y SILVERLAKE BRUTE 18B RST AVERY 19A</p> <p>SSP UNLEASHED 826U TWIN-CHIEF THYME 42T CNS DREAM ON L186 ACPA BLACK FUTURE 3R</p>
---	--

BW	WW	YW	CE	BW	WW	YW	MWW	MCE	MILK
96	860	1395	7.6	2.7	74.2	111.5	67.3	3.7	30.2

HOMO POLLED. Another great Freadey calf who puts it all together in one package. When glancing in the pen, he always sticks out from the rest of them. Probably one of the stoutest red calves this year and off the awesome 45D cow. A brother sold in last year's sale to Shayson Simmentals at Bonnyville. She is an outstanding female that is a definition for broody, and has the most rib shape probably as any female in our operation.



BRSF 64J - MATERNAL SIB TO LOT 08

lot
08

lot
09



HETERO POLLED. Well, what can I say about this one's dam. First of all, she's defiantly the hardest working female in the herd. She has raised numerous calves with tons of performance! One has sold to Kevin Liebert, another to Werstroh Farms, and to the Dechaine Family. Consistency is one of those key ingredients on making a profit, and she has done that for us. 63k is a super long bodied and smooth made bull who has some great potential.

09. BRSF RS FREADEY 63K **

POLLED PUREBRED RED | JAN 9, 2022 | 1407272 | BRSF 63K

KUNTZ SHERIFF 8A
RST FREADEY 16F
RST DAISY 18D

KUNTZ MARSHALL 12Y
PEACOCK'S LI'L NETTIE 23Y
SILVERLAKE BRUTE 18B
RST AVERY 19A

NUG RECOIL 272Y
BLUSHROSE MS AMY 307A
BLUSHROSE MS KODIAK 29X

IPU 52N ACCELERATOR 222U
NUG SHERRY 686S
MUIRHEADS KODIAK 109U
BLUSHROSE MS RYDER 23R

BW	WW	YW	CE	BW	WW	YW	MWW	MCE	MILK
95	800	1300	8.3	2.1	66.3	101.2	58.9	4.2	25.7



BRSF 806F - MATERNAL BROTHER TO LOT 09

Calving Ease

Over the last few years, we have noticed a fair share of Cattleman wanting a touch smaller birthweights on the bulls they are buying. We have put that to mind and used some calving ease sires while still maintaining that growth and performance. You don't need the biggest cow to raise the best bulls, you just need a cow that puts her calf before herself! Every calf gets weighted right after they are born and anything that needs our assistance, loses its chance at making the bull pen the next year! Here is a helpful system to assist you in selection!

- * Recommended for cows only
- ** Recommended for cows or larger framed heifers
- *** Recommend for heifers and cows.

Weights

Weaning weights were taken **SEPTEMBER 20, 2022**

Yearling weights were taken **JANUARY 15, 2023**

ALL WEIGHTS WERE ACTUAL WEIGHTS ON THESE DATES, NO ADJUSTING.

lot
10



HETERO POLLED. You maybe want to make time to view this one's dam! Broody, fleshy, and capacity would be a few terms to describe her! The Tosca cow family has really knocked it out of the park a few times lately and we are thrilled to have many daughters off the 118Y cow. The recoil in this one's bloodline and the Freadey has really proven to be a great cross. The dark colour and nice hair coat should make for some exciting females down the road!

10. BRSF RS FREADEY 70K **

POLLED PUREBRED RED | JAN 10, 2022 | 1407284 | BRSF 70K

11. BRSF RS FREADEY 107K **

POLLED PUREBRED RED | JAN 20, 2022 | 1407304 | BRSF 107K

KUNTZ SHERIFF 8A
RST FREADEY 16F
RST DAISY 18D

NUG RECOIL 272Y
BRSF LADY TOSCA 28D
KHG TOSCA 118Y

KUNTZ MARSHALL 12Y
PEACOCK'S LI'L NETTIE 23Y
SILVERLAKE BRUTE 18B
RST AVERY 19A

IPU 52N ACCELERATOR 222U
NUG SHERRY 686S
NCB RED SUSPECT 30S
KHG PASSION 39R

KUNTZ SHERIFF 8A
RST FREADEY 16F
RST DAISY 18D

NUG RECOIL 272Y
BRSF KESHA 10B
GREENSPRUCE WEST LADY 11W

KUNTZ MARSHALL 12Y
PEACOCK'S LI'L NETTIE 23Y
SILVERLAKE BRUTE 18B
RST AVERY 19A

IPU 52N ACCELERATOR 222U
NUG SHERRY 686S
ERIXON RED A NUFF 208R
GREEN SPRUCE MADONNA 14M

BW	WW	YW	CE	BW	WW	YW	MWW	MCE	MILK
92	810	1330	6.9	2.8	73.4	110.8	59.5	1.1	22.8

BW	WW	YW	CE	BW	WW	YW	MWW	MCE	MILK
102	825	1350	4.4	4.8	76.2	114.7	63.5	1.6	25.4

HOMO POLLED. What a dandy! Here is one off of the good Kesha cow that we had for many years. Unfortunately, we lost her last winter and this guy was forced to be raised by a heifer. I'm not saying that she didn't do a good job of raising him, but he defiantly didn't have the milk like he would have had if his real dam wouldn't have been deceased. He may be a touch greener than others in the sale but I can tell you for sure that he will meet all those expectations and that I know that pedigree can produce. A sibling sold to Rocky Top Cattle Company a few years ago. A couple good bull calves sold to Lakeview Colony, another to Kevin Gringras. It's an easy choice of some proven and powerful genetics that do nothing but work extremely great!



lot
11

lot
12



HOMO POLLED. It's not too often we keep twins to put in the bull sale, but when it came time to weaning, we were shocked by the development of these two. They are off one of my favourite females in 9D. She's a female who really has developed well and keeps exceeding all expectations. She has some performance, a nice tidy udder, and has the pedigree behind her to do big things every year. These two bulls really throw it all together. A great mix of genetics, Sheriff, Super Duty and from a great old cow that we purchased from Diamond J many moons ago. Last year's calf sold to Prairie Hill Farms, who was a full sibling and started the sale for us! If I had to pick which calf I would take, I would probably just grab them both at the same time! They have the darkness, balance, and great structure from the ground up!

12. **BRSF RS FREADEY 79K** **

POLLED PUREBRED RED | JAN 12, 2022 | 1407275 | BRSF 79K

13. **BRSF RS FREADEY 80K** **

POLLED PUREBRED RED | JAN 12, 2022 | 1420043 | BRSF 80K

KUNTZ SHERIFF 8A
RST FREADEY 16F
RST DAISY 18D

KUNTZ SUPER DUTY 4Y
BRSF LADY TESSA 9D
DIAMOND J SNAP 103W

KUNTZ MARSHALL 12Y
PEACOCK'S LI'L NETTIE 23Y
SILVERLAKE BRUTE 18B
RST AVERY 19A

NCB RED SUSPECT 30S
MISS R PLUS 7037T
SFM 24R
DIAMOND J BODYBUILDER 37R

KUNTZ SHERIFF 8A
RST FREADEY 16F
RST DAISY 18D

KUNTZ SUPER DUTY 4Y
BRSF LADY TESSA 9D
DIAMOND J SNAP 103W

KUNTZ MARSHALL 12Y
PEACOCK'S LI'L NETTIE 23Y
SILVERLAKE BRUTE 18B
RST AVERY 19A

NCB RED SUSPECT 30S
MISS R PLUS 7037T
SFM 24R
DIAMOND J BODYBUILDER 37R

BW	WW	YW	CE	BW	WW	YW	MWW	MCE	MILK
81	790	1320	9.2	1.2	71.7	106.1	67.1	4.1	31.2

BW	WW	YW	CE	BW	WW	YW	MWW	MCE	MILK
82	795	1320	7.8	2.4	79.5	117.5	71	3.2	31.3

Twin to Lot 12



lot
13



BRSF 70J - FULL SIB TO LOT 12 & 13



BRSF RS FREADEY 111K

** POLLED PUREBRED RED | JAN 21, 2022 | 1407309 | BRSF 111K

14

KUNTZ SHERIFF 8A
RST FREADEY 16F
RST DAISY 18D

ANKONIAN RED CAESAR
ERIXON LADY 117U
DOUBLE BAR D AVA 47S

KUNTZ MARSHALL 12Y
PEACOCK'S LI'L NETTIE 23Y
SILVERLAKE BRUTE 18B
RST AVERY 19A
BOZ REDCOAT
GFI CANDACE G51
LFE RED ENTICER 364M
DOUBLE BAR D AVERY 32M

BW	WW	YW	CE	BW	WW	YW	MWW	MCE	MILK
98	850	1380	4	5	81.7	121.3	74.7	4.4	33.8

HOMO POLLED. Here we are at another great Erixon 117U progeny! Unfortunately, we lost her last winter during calving. There are 4 calves off her in the sale this year. This one is her actual natural calf that she had. He was raised by a first calf heifer whom did a wonderful job with him considering the circumstances. The list of animals she has produced is outstanding. Many bulls have sold off of her and the females have all been retained! The only cows that get flushed here are the proven production females, who have a wicked track record. 111K is cut from the same cloth and we are thrilled to see where he will go to work.

Birthweights on the embryo transfer calves may not be completely accurate due to many factors of the recipient cows that raised them.

**Lot 14,15,16 Dam, ERIXON LADY 117U
8 Natural Calves had an average birth weight of 93 lbs.**



BRSF 90H - MATERNAL SIB TO LOT 14, 15 & 16

lot
15



HOMO POLLED. Another mating from 117U! While down at Maple Creek visiting Cole and Landon Weiss, we were fortunate enough to get a tour of their massive pasture full of Herdbulls. When I came across Mandako on the tour, I couldn't believe how balanced he was for an older herdbull, his colour was incredible, foot structure. Before I left the ranch, we had some semen secured and we flushed with it soon after. They aren't the largest bulls in the offering, but they have tons of depth, thickness. 51K was orphaned in April. Not sure what happened but him and his mother got separated and we didn't catch it in time and therefore they went to the pasture together but his recip dam was dry. What you see is what you get, he did it himself!

15. BRSF RS MANDAKO 51K **

POLLED PUREBRED RED | JAN 7, 2022 | 1406998 | BRSF 51K

ZSL MR RED MANDAKO 49B
RENDEZVOUS MANDAKO 124D
RENDEZVOUS KENDRA 124A

ANKONIAN RED CAESAR
ERIXON LADY 117U
DOUBLE BAR D AVA 47S

LRX THE GODFATHER 141Z
ZSL MISS STEELER 104Y
NUG TRIGGER 263Y
RENDEZVOUS 630W

BOZ REDCOAT
GFI CANDACE G51
LFE RED ENTICER 364M
DOUBLE BAR D AVERY 32M

16. BRSF RS MANDAKO 74K **

POLLED PUREBRED RED | JAN 11, 2022 | 1407016 | BRSF 74K

ZSL MR RED MANDAKO 49B
RENDEZVOUS MANDAKO 124D
RENDEZVOUS KENDRA 124A

ANKONIAN RED CAESAR
ERIXON LADY 117U
DOUBLE BAR D AVA 47S

LRX THE GODFATHER 141Z
ZSL MISS STEELER 104Y
NUG TRIGGER 263Y
RENDEZVOUS 630W

BOZ REDCOAT
GFI CANDACE G51
LFE RED ENTICER 364M
DOUBLE BAR D AVERY 32M

BW	WW	YW	CE	BW	WW	YW	MWW	MCE	MILK
102	790	1295	2.1	7.4	79	114	73	0	33.5

BW	WW	YW	CE	BW	WW	YW	MWW	MCE	MILK
92	810	1300	0.9	8	79	118.7	73	-0.7	33.5

HOMO POLLED. 74K is a sweet made individual that has that moderate frame size and got that money stripe across his forehead. If you want bulls that will be consistent and be competitive breeders, throw these two out together and watch them go to work!



lot
16



BRSF RS CASH 145K

*** POLLED PUREBRED RED | FEB 2, 2022 | 1407320 | BRSF 145K

17

CIRCLE G CASH 1C
KKH CASH 14F
KKH MS SONYA 570C

LWC FINAL AFFAIR 163D
BRSF RS LADY MICKEY 21H
PERKS MICKEY 790E

KWA FLYF RED MOUNTAIN 16Z
SWAN LAKE NO SECRET 76A
CROSSROAD CHEVALIER 163Z
TRI K MS SONYA 36Y

WHEATLAND FINAL AFFAIR
LWC MISS RENDEZVOUS 183X
LRX THE GODFATHER 141Z
PERKS MICKEY 90T

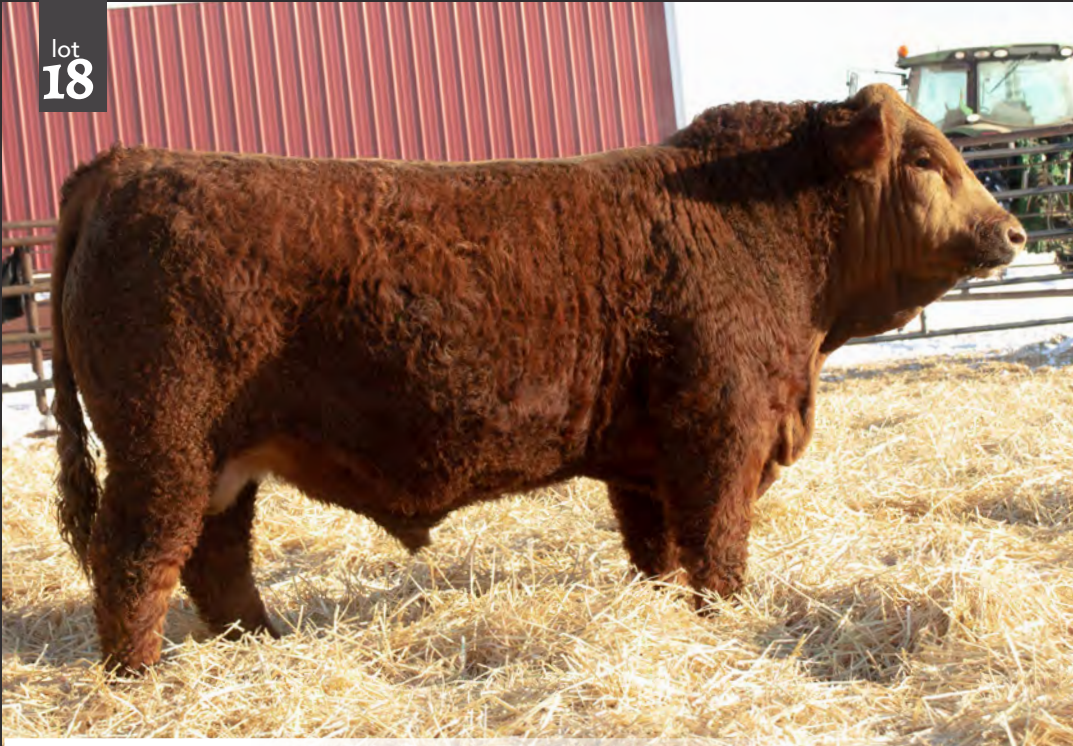
BW	WW	YW	CE	BW	WW	YW	MWW	MCE	MILK
91	785	1310	6.3	3.5	76.2	118.3	70.6	2.9	32.5

HOMO POLLED. This one gets me fired up! A Cash son who is for-sure the second- best son to come from him! He has the coolest structure, is super wide, and just as stout as you can make them. Hair is no problem, and sogginess and ruggedness are no problem, all while maintaining that calving ease we all need some of. His mother is a neat individual who has the real tight and tidy udder, she has a nice splash of white on her forehead so the possibility of some chrome is highly likely! The pedigrees in this one's blood comes with the likes of Final Affair, and back to the great Godfather bull from Robbs. I think will do a lot of good on some young females!



KKH CASH 14F - SIRE OF LOT 17, 18, 19, 22

lot
18



HOMO POLLED. We sold this guy's dam to the Hoffman family in last year's Source Sale, she then ended up coming back home to calve and now he is the resulting calf that was inside her. Another one off of the Tori cow family who is represented multiple times in the catalogue, you know of the longevity that ensues! Everyone asked me who was my favourite heifer we sold, my thought was 125H! She's not the flashiest female, or the fanciest, but brood cow is her middle name, and she is the type of female who keeps the lights on! His guy is homo polled, and should calve really well with his bloodlines. He has great hair, is super soft in his makeup, and is just plain out good. We are excited to see who will step-up and get this one bought, he is the right type and kind for the industry.



BRSF 125H - DAM OF LOT 18

18. **BRSF RS CASH 82K** ***

POLLED PUREBRED RED | JAN 13, 2022 | 1407287 | BRSF 82K

19. **BRSF RS CASH 100K** ***

POLLED PUREBRED RED | JAN 17, 2022 | 1407301 | BRSF 100K

CIRCLE G CASH 1C
KKH CASH 14F
KKH MS SONYA 570C

ZSL MR ESCOBAR 49E
BRSF RS LADY TORI 125H
BLUSHROSE LADY TORI 57B

KWA FLYF RED MOUNTAIN 16Z
SWAN LAKE NO SECRET 76A
CROSSROAD CHEVALIER 163Z
TRI K MS SONYA 36Y

MRL CAPONE 130B
ZSL MISS ELECTRIC 22Y
NUG RECOIL 272Y
BLUSHROSE MS TORILANE 26T

CIRCLE G CASH 1C
KKH CASH 14F
KKH MS SONYA 570C

KS BRAVADO P68
BRSF RS LADY SADIE 4H
BRSF LADY SADIE 829F

KWA FLYF RED MOUNTAIN 16Z
SWAN LAKE NO SECRET 76A
CROSSROAD CHEVALIER 163Z
TRI K MS SONYA 36Y

FR REZULT
RIV RED BRIGADIA 969J
KUNTZ SUPER DUTY 4Y
ERIXON LADY 117U

BW	WW	YW	CE	BW	WW	YW	MWW	MCE	MILK
95	760	1275	6.6	3.1	71	109.6	64.3	3.3	28.8

BW	WW	YW	CE	BW	WW	YW	MWW	MCE	MILK
86	780	1260	9	1.3	69.1	106.8	68.2	5.3	33.6

HOMO POLLED. A little bit of calving ease in this one! He came off of an awesome red baldy female who did great work on her first calf! If you notice, she goes back to the great 117U who is a donor to some of the previous red and black bulls, you will see her in many pedigrees. With the addition to sired by Cash, you know you going to have calving ease, growth, and a ton of vigour. We have used Cash for 4 years now, and probably 200 heifers later, he just plain out works. This guy is built smooth, friendly, and can pretty much be thrown in with any type of female.



lot
19



BRSF/GL RS LAWLESS 35K

* POLLED PUREBRED RED | JAN 5, 2022 | 1407018 | BRSF 35K

20

CDI AUTHORITY 77X
KWA LAW MAKER 59C
KWA MS ROCK 14X

NF TRUMP S582
CDI MS CROCKET 88T
KWA RED ROCK 5T
KWA MS BARON 9U

ANCHOR D BLACK BEARD 17A
BRSF LADY SAVANNAH 37E
BRSF BEECH 15B

LFE BS LEWIS 322U
GARREN'S TIA DALMA 17X
ANCHOR D TRUE GRIT 520Y
BEECH BROS XANTHIPPE 32X

HOMO POLLED. What an exciting offering we have here with these three embryo calves off the "Savannah" cow of Justin & Maris. Years ago, out pasture checking with Justin, we came across the good old "15B" cow, at the time she had this wicked baldy heifer calf, which so happened to be "Savannah." Before we left the field, the deal was pretty much done, Justin bought the calf at side in the summer time. After her first calf was born, Justin decided to flush her, and the rest was history. Unfortunately, we lost her this winter through the cold weather, this will be your last chance to grab up her flush calves! Justin bred her to the popular "Lawmaker," who has grabbed a lot of attention over the years for his powerful bull calves. These two lawmaker sons are some of the softest, coolest, and stoutest calves in the offering! Little bit of chrome on their foreheads, it's a match made in heaven. Substance, spring of rib, and will make those "most wanted" replacement heifers, and pound out some wicked steers or bulls. Here is a chance to acquire some standout genetics, a mix of red, black and fullblood within this dazzling pedigree! Tried, tested and true, we have two impressive individuals! Close your eyes and pick one, or be smart and choose both! Owned with Glessman Livestock.

BW	VW	YW	CE	BW	VW	YW	MWV	MCE	MILK
104	845	1410	7.3	4.7	81.7	127.2	74.6	1.5	33.7

Birthweights on the embryo transfer calves may not be completely accurate due to many factors of the recipient cows that raised them.

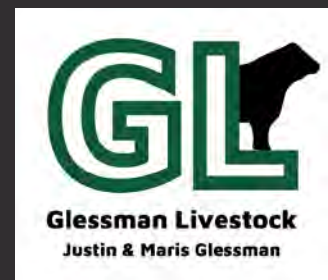
Lot 20,21,22 Dam, BRSF Lady Savannah 37E
4 Natural Calves had an average birth weight of 80 lbs.



KWA LAW MAKER 59C - SIRE OF LOT 20 & 21



BRSF 37E - DAM OF LOT 20, 21 & 22



Lot's 20, 21 & 22 co-owned with Glessman Livestock

lot
21



HETERO POLLED.



BLACK BEARD 17A - MGS OF LOT 20, 21 & 22



BRSF 23K - LOT 21

21. BRSF/GL RS LAWBREAKER 23K **

POLLED PUREBRED RED | JAN 2, 2022 | 1406984 | BRSF 23K

22. BRSF/GL BS BITCOIN 77K ***

POLLED PUREBRED BLACK | JAN 11, 2022 | 1407019 | BRSF 77K

CDI AUTHORITY 77X
KWA LAW MAKER 59C
KWA MS ROCK 14X

ANCHOR D BLACK BEARD 17A
BRSF LADY SAVANNAH 37E
BRSF BEECH 15B

NF TRUMP S582
CDI MS CROCKET 88T
KWA RED ROCK 5T
KWA MS BARON 9U

LFE BS LEWIS 322U
GARREN'S TIA DALMA 17X
ANCHOR D TRUE GRIT 520Y
BEECH BROS XANTHIPPE 32X

CIRCLE G CASH 1C
KKH CASH 14F
KKH MS SONYA 570C

ANCHOR D BLACK BEARD 17A
BRSF LADY SAVANNAH 37E
BRSF BEECH 15B

KWA FLYE RED MOUNTAIN 16Z
SWAN LAKE NO SECRET 76A
CROSSROAD CHEVALIER 163Z
TRI K MS SONYA 36Y

LFE BS LEWIS 322U
GARREN'S TIA DALMA 17X
ANCHOR D TRUE GRIT 520Y
BEECH BROS XANTHIPPE 32X

BW	WW	YW	CE	BW	WW	YW	MWW	MCE	MILK	BW	WW	YW	CE	BW	WW	YW	MWW	MCE	MILK
90	835	1400	5.1	3.7	71.2	107	69.3	0.2	33.7	93	770	1330	9.5	2.3	60.1	87.2	63.9	4.5	33.8

HOMO POLLED. HETERO BLACK. This just so happens to be the third bull of the Savannah flush, but off of our incredible calving ease bull "Cash." This guy is a real impressive individual who carries great shape, style, and smooth throughout his shoulders, and into his rib cage. The splash of white on his forehead and his ability to move in a great pattern is just a few great attributes that make him desirable. He came super tiny off of his recipe mother and one thing is for certain, these "Cash" calves get up and go! I think this is a great opportunity to use him on many different types of females with his dual purposes! Coloured just like his sib that sold a few years ago in our bull sale, consistency in colour, makeup, and kind, shows the real reason we flushed the dam so early in production. 77K is going to go to work, calve easy, and make you nothing but profit and ad great things to your cowherd! Owned with Glessman Livestock.



lot
22



BRSF BS TURNPIKE 56K

** POLLED PUREBRED BLACK | JAN 8, 2022 | 1407002 | BRSF 56K

23

WBF SIGNIFICANT B132
RUBYS TURNPIKE 771E
RUBYS MISS CLEO 240Z

ANKONIAN RED CAESAR
ERIXON LADY 117U
DOUBLE BAR D AVA 47S

GW-WBF SUBSTANCE 820Y
WBF HEBE X376
OVAL F RINGLEADER R579
RUBYS MISS CLEO 964W
BOZ REDCOAT
GFI CANDACE G51
LFE RED ENTICER 364M
DOUBLE BAR D AVERY 32M

BW	WW	YW	CE	BW	WW	YW	MWW	MCE	MILK
91	865	1410	2.7	7.6	100.3	156.4	86.2	2.3	36



RUBYS TURNPIKE 771E - SIRE OF LOT 23

HOMO POLLED. HETERO BLACK. I hope I don't regret putting this one into the bull sale. Likely you'd have to drive many miles to find a bull with as much width, substance, top, and hair like this one has. Or just drive here and he's sitting in the bull pen! Sitting here writing this footnote makes me want to just pull him completely out of the sale catalogue and just plan which cows I'm going to breed him to. He is the only bull calf we ended up getting off this "Turnpike," x "117U" flush. Of course, there are a few replacement females off the same flush that I will promise will never leave the farm. The now deceased 117U, was a female we bought from Erixon's out of their bull sale a long time ago. She managed to exceed all our expectations we put on her and even expected. Multiple high sellers, to the most respected cattlemen in the country, she made a good one every year. We were lucky enough to have her flush incredibly for a year and have many calves coming off of her! Sometimes you get lucky. When I say he is an outcross to every black cow on the farm, I mean it! I have many dreams of this one going out and doing some extremely big things! Using the great "Turnpike" bull with semen we bought out of Dimlers, its defiantly something we aren't used to. He added some flare, style, and eye appeal to some of our broodier females. A little mix of this, a little mix of that, we ended up with something really special. This is one that I think we would really like to use in the future, that's how much we think of him! Retaining 100 Straws for Inherd Use Only. Terms to be announced.

lot
24



HETERO POLLED. Homo Black. When I started to clip bulls this fall, this one came through the chute, it was like I was clipping a table top! This guy is THICK!!! He is WIDE!!! and is HAIRY!!! With a little splash of white on his flank, this one has some potential to do big things! He is moderate, the stoutest bull in the offering and off of a great cow from the Wilcox's in Manitoba! When you study his pedigree, he will be the leadoff Midland calf on the first ever calf crop. We bought Midland from the legendary Maxwell program a few years ago to add some hair, stoutness, structure, and add a little white on the foreheads! His dam 41E, is a beauty who has flawless udder shape, and a cool pedigree with a hint of Flirt, and some Enticer on the bottom of the pedigree. This one is worth the drive!



NUG 229H - SIRE OF LOT 24, 25, 26, 27, 28, 29

24. BRSF BS MIDLAND 33K **

POLLED PUREBRED BLACK | JAN 5, 2022 | 1407271 | BRSF 33K

25. BRSF BS MIDLAND 71K **

POLLED PUREBRED BLACK | JAN 10, 2022 | 1407294 | BRSF 71K

TJSC BOONE PICKENS 46C
NUG MIDLAND 229H
NUG LIBBY 55E

RF NITRO 219Z
WILC EVIE 41E
TCW BLACK PEARL 14A

REMINGTON LOCK N LOAD 54U
TJSC KNOCKOUT 121Y
WFL WESTCOTT 24C
BLACKSAND SADIE 4Z
JF/AJE RENDITION 738T
TLG FLIRTIN WITH YOU
SHS ENTICER P1B
TCW RUBY

TJSC BOONE PICKENS 46C
NUG MIDLAND 229H
NUG LIBBY 55E

RKTS PRAIRIE STORM 1B
KHG KYNDRA 13F
KHG LAYNE 555B

REMINGTON LOCK N LOAD 54U
TJSC KNOCKOUT 121Y
WFL WESTCOTT 24C
BLACKSAND SADIE 4Z
SHS ENTICER P1B
MADER POLLED RAIN MAKER 28W
SAJ FRIGID 5Z
KHG MS GOLD 62Z

BW	WW	YW
105	840	1395

CE	BW	WW	YW	MWW	MCE	MILK
4.8	5.4	84.2	127.4	63.7	1.9	21.6

BW	WW	YW
86	800	1300

CE	BW	WW	YW	MWW	MCE	MILK
8.5	2.6	80.9	123.2	61.9	4.2	21.4

HOMO POLLED. HOMO BLACK. Some days can be challenging while picturing, but this one glided his way into the picture pen and set up for a wonderful picture, a swift click of the button and he was off and, on his way, back to his friends! Off a great young black baldy female, they were a matching pair this summer, and very easy to stand out. Another stout, moderate framed individual that is going to be a baldy maker machine! He is very deep chested, tons of expression when you get behind him. He gets out and strides well and will be in the perfect shape and condition to go into his first season of breeding.



lot
25

lot
26



HETERO POLLED. HETERO BLACK. Little bit younger character we have here that quickly thrived in the bull pen and reached the top in a quick fashion. When I say his dam is a stellar female I mean it! From the great Tori cow family, they strive from a line of females who always outshine the rest. She is also off of the great Black Beard, who spent 10 years here breeding cows. I was sent to Anchor D, to buy a fullblood, and I came back with a black. Likely one of the best decisions of my life so far. He is ranked very high within the bull pen with an 805 WWT considering he is the youngest calf in the pen! A very respected average daily gain! He is a very chunky individual, has some of the best hair I've ever seen, and has tons of shape, muscle, and depth. He can compete with anyone!

26. BRSF BS MIDLAND 182K **

POLLED PUREBRED BLACK | FEB 19, 2022 | 1419266 | BRSF 182K

27. BRSF BS MIDLAND 27K **

POLLED PUREBRED BLACK | JAN 4, 2022 | 1407269 | BRSF 27K

TJSC BOONE PICKENS 46C NUG MIDLAND 229H NUG LIBBY 55E	REMINGTON LOCK N LOAD 54U TJSC KNOCKOUT 121Y WFL WESTCOTT 24C BLACKSAND SADIE 4Z
ANCHOR D BLACK BEARD 17A BRSF LADY TORI 82E BLUSHROSE MS TORILANE 26T	LFE BS LEWIS 322U GARREN'S TIA DALMA 17X BLUSHROSE MR RAVEN 30R BLUSHROSE MS NOLA 10N

TJSC BOONE PICKENS 46C NUG MIDLAND 229H NUG LIBBY 55E	REMINGTON LOCK N LOAD 54U TJSC KNOCKOUT 121Y WFL WESTCOTT 24C BLACKSAND SADIE 4Z
TER-RON ABSOLUTE 54D BRSF LADY SHALIMAR 84oF LFE BS SHALIMAR 173X	TER-RON ABSOLUTE 447B DEEG MS 54Y MR NLC SUPERIOR S6018 LFE BS SHALIMAR 154T

BW	WW	YW	CE	BW	WW	YW	MWW	MCE	MILK	BW	WW	YW	CE	BW	WW	YW	MWW	MCE	MILK
87	805	1350	7.1	4	75.7	114.8	62.9	2.3	25.1	85	815	1390	10.9	1.2	75.8	116	61.1	5.2	23.2

HOMO POLLED. HETERO BLACK. What are the chances of writing a footnote for this bull, meanwhile, I just dragged his 13-year-old grandam into the barn with another bull calf! He pictured like a Rockstar, had a great weaning weight, all while coming into the world with an 85 lb birthweight. His dam is an awesome female who we really enjoy owning and whom was one of the first females to calve again this year. These Absolute females are some of the best we've ever had and are thrilled to have a decent amount of. He has that sass, that incredible hair coat, and is super well footed. His topline is incredible, has always has that herdbull crest, and has great conformation. This would definitely be a bull to add masculinity to steers, and add a great deal of wanted characteristics to many types of females.



lot
27

lot
28



Homo Polled. Hetero Black. We liked this one's mother so much, we brought her from Ontario! Another proven bloodline in this one's pedigree. The good Spring Creek Olympian was a really sought-after sire for many years in the industry, and for good reason. 142K is a nice calf in the pen of bulls with his nice birthweight of 87 lbs, and a very high weaning weight of 805. Simply put, it's a bull that always looks the part, and would be an easy choice to fit many different operations.

28. BRSF BS MIDLAND 142K **

POLLED PUREBRED BLACK | FEB 1, 2022 | 1409278 | BRSF 142K

29. BRSF BS MIDLAND 161K **

POLLED PUREBRED BLACK | FEB 7, 2022 | 1407329 | BRSF 161K

TJSC BOONE PICKENS 46C
NUG MIDLAND 229H
NUG LIBBY 55E

SPRINGCREEK OLYMPIAN 66A
DWAYANN BLACH JAZZ 61F
KNOLLBROOK MS JOKER 14Y

REMINGTON LOCK N LOAD 54U
TJSC KNOCKOUT 121Y
WFL WESTCOTT 24C
BLACKSAND SADIE 4Z

SPRINGCREEK ALL IN 155Y
SPRINGCREEK LINNE 33R
WAYDMAR RED TAVARES 105T
JBM MS JOKER 13T

TJSC BOONE PICKENS 46C
NUG MIDLAND 229H
NUG LIBBY 55E

ANCHOR D BLACK BEARD 17A
BRSF LADY MILA 88E
BRSF MS BLUSHROSE 45Z

REMINGTON LOCK N LOAD 54U
TJSC KNOCKOUT 121Y
WFL WESTCOTT 24C
BLACKSAND SADIE 4Z

LFE BS LEWIS 322U
GARREN'S TIA DALMA 17X
G-SEVEN POL ROCKET 12P
BLUSHROSE MS NOLA 10N

BW	WW	YW	CE	BW	WW	YW	MWW	MCE	MILK	BW	WW	YW	CE	BW	WW	YW	MWW	MCE	MILK
87	805	1300	7.5	3.6	80.1	119.2	62.2	3.7	22.1	95	740	1255	8.4	3.4	71.5	107.6	60.3	3	24.5

HETERO POLLED. HETERO BLACK. 161K is a smooth made individual who combines a lot of key strengths. It is without question one of the most influential cow families on the farm. Mila has done a great job at producing top cut females, a couple of her daughters that we have now in production 48J and 155H are the exact type of black baldies that we're trying to build our cowherd with. This mating to Midland is very exciting to me, of course it would have been cool to have a baldy but it's in the genetics! The pen of Midland calves continues to impress me each day and this one holds his ground in that group.



BLACK BEARD 17A - MGS OF LOT 26 & 29



lot
29

lot
30



HOMO POLLED. HETERO BLACK. I am not sure if there is a bull that is stouter and more stylish. 66K sticks out for his moderate frame, ability to move, and the absolute best hair you could possibly dream of. His mother is a female that we sold to the Hoffmans last year in the Source Sale, she did a bang-up job on the first go. You have to see 23H in person to really understand how good she really is. Perfect, I mean perfect udder, and is built to perfection. 66K is a bull that would work on many different types of females. Not the largest bull but I think on some younger cows, and heifers, he is sure to do some great things. His pedigree stacked with an abundance of proven sires. Bentley, Absolute on the top, and Final Affair on the bottom! These pedigree crosses are really working! I would be more then confident to go and throw him out with my cows or my heifer pen. That's how much I love this one!



BRSF 23H - DAM OF LOT 30

30. BRSF BS JAGUAR 66K *
POLLED PUREBRED BLACK | JAN 9, 2022 | 1407292 | BRSF 66K

31. BRSF BS JAGUAR 75K **
POLLED PUREBRED BLACK | JAN 11, 2022 | 1407360 | BRSF 75K

IPU BENTLEY 81F
RF JAGUAR 054H
RF MS 669D

LWC FINAL AFFAIR 163D
BRSF BS LADY AFFAIR 23H
COLT MS 26C

WHEATLAND BENTLEY 630D
CLAYHILL FANCY LUCA 39A
WFL ABSOLUTE 51Y
DEEG MS 155B

WHEATLAND FINAL AFFAIR
LWC MISS RENDEZVOUS 183X
WHEATLAND BULL 356A
COLT'S MS ECLIPSE 35A

IPU BENTLEY 81F
RF JAGUAR 054H
RF MS 669D

VIRGINIA JOSEPH 1013F
JKN HAZEL
WHR ELLA 22E

WHEATLAND BENTLEY 630D
CLAYHILL FANCY LUCA 39A
WFL ABSOLUTE 51Y
DEEG MS 155B

DOUBLE BAR D BANKER
BLI REBA
MTV CORVIAR 6B
WHR MS CATHY 22C

BW	WW	YW	CE	BW	WW	YW	MWW	MCE	MILK
74	780	1280	10.6	1.6	83.4	121.1	63.7	5.2	22

BW	WW	YW	CE	BW	WW	YW	MWW	MCE	MILK
86	810	1320	7	3.6	81.2	112.8	72.4	3.1	31.8

HOMO POLLED. HETERO BLACK. Another Jaguar son and off a first calf heifer. If you saw Jaguar in person, you wouldn't know that he is a calving ease bull. He is built stout, and has tons of muscle and jam to him, but he calves like a pro! His mother is a young female who is a red cow and shows a lot of promise. Different bloodline with a little bit of fleck, he is more of an outcross to what we have. A WW of 810 is really impressive considering the dry weather and the less than ideal rations we had the cows on this spring. 75K is solid made, stout and is made super long. Grab up any Jaguar calves and you will really appreciate them, and how honest they are made.



RF JAGUAR 054H - SIRE OF LOT 30, 31, 32, 33

lot
31

lot
32



HOMO POLLED. HETERO BLACK. An exciting black herd bull prospect that shows a lot of promise. A real moderate birthweight with a great weaning weight. He is off an awesome black baldy female that has shown she can produce in her young age. This combination of Jaguar mixed with the top end bulls in Final Affair and Black Beard has us really excited for this one's future. We are calving his sire Jaguar on the entire pen of black and red females right now and they are coming super reasonably on birthweight. In the 70's to 80's across the board. This one will throw those CE numbers into your cowherd and maintain the performance coming from the dam's side of the pedigree!

32. BRSF BS JAGUAR 78K **

POLLED PUREBRED BLACK | JAN 12, 2022 | 1407296 | BRSF 78K

33. BRSF BS JAGUAR 108K **

POLLED PUREBRED BLACK | JAN 20, 2022 | 1407316 | BRSF 108K

IPU BENTLEY 81F
RF JAGUAR 054H
RF MS 669D

LWC FINAL AFFAIR 163D
BRSF BS LADY MILA 155H
BRSF LADY MILA 88E

WHEATLAND BENTLEY 630D
CLAYHILL FANCY LUCA 39A
WFL ABSOLUTE 51Y
DEEG MS 155B

WHEATLAND FINAL AFFAIR
LWC MISS RENDEZVOUS 183X
ANCHOR D BLACK BEARD 17A
BRSF MS BLUSHROSE 45Z

IPU BENTLEY 81F
RF JAGUAR 054H
RF MS 669D

LWC FINAL AFFAIR 163D
BRSF BS LADY AFFAIR 88H
SFM BS 60D

WHEATLAND BENTLEY 630D
CLAYHILL FANCY LUCA 39A
WFL ABSOLUTE 51Y
DEEG MS 155B

WHEATLAND FINAL AFFAIR
LWC MISS RENDEZVOUS 183X
SPRINGCREEK ROCKER 909A
SFM MISS 11Y

BW	WW	YW	CE	BW	WW	YW	MWW	MCE	MILK
87	770	1385	7.8	3.5	81.6	118.1	65.7	3.5	24.9

BW	WW	YW	CE	BW	WW	YW	MWW	MCE	MILK
90	775	1305	6.3	4.5	91.9	133.1	69.2	3.0	23.2

HOMO POLLED. HOMO BLACK. $\frac{3}{4}$ brother to the next lot ahead in Lot 34. Another great combination in the Jaguar crossed with the Final Affair females. It's hard not to appreciate what these first calver's did with our harsh environments we have had the last two year's. Again, she is a tight uttered female who has a great hair coat. While picturing this guy, Dad and I both commented, "wish they all had a hair coat like this one." Homo Polled and Homo Black, you already know what you're going to get! All black calves and all polled. It's like predicting the future!



lot
33



BRSF FB ELLIOTT 68K

**

HORNED FULLBLOOD | JAN 10, 2022 | 1407289 | BRSF 68K

34

BDJL FF ZORRO
R-FIVE ELLIOTT 15E
R-FIVE BEVERLEY 81B

ANCHOR D IMAX 250Y
BLUSHROSE MS ADEL 325 A
BLUSHROSE ROXY 25Y

ROOINIK
BDJL LEGEND'S REPLICA
VIRGINIA FINEWINE 289X
R-FIVE PENNY

HEMR SAMURAI 7S
DORA LEE ELEXIS
G-SEVEN POL ROCKET 12P
DIAMOND J CRACKER 41U

BW	WW	YW	CE	BW	WW	YW	MWW	MCE	MILK
94	940	1425	9	3.6	80	112.5	78.9	6.2	38.9

NON-DILUTER. Well, we made it to the fullblood portion of the catalogue. We don't have the numbers like the last few years. We had a very high rate of females born in the pen of Fullbloods! It was an easy choice to throw this one at the front of the group to lead off the section. This guy has some performance all while coming relatively small for how big and broody his dam is. The momma cow to him is the favourite fullblood of mine now. She has the most unique pigment, with her face being almost all red, you'd think she was almost a red baldy purebred! A full sib to him sold a couple years ago to some of our best friends, Brendon and Rheann Alm! The calves off that guy bred to Charolais cross cows were some real exciting crosses! She is a female who never seems to disappoint and always weans the biggest calves consistently. The highest weaning weight of the entire pen at 940! A super high Average Daily Gain! It's a no brainer she's a favourite with the great Dora Lee Elexis in her blood as well as Diamond J Cracker and Pol Rocket!



BRSF 68K - LOT 34



BRSF 55H - FULL SIB TO LOT 34

lot
35



NON-DILUTER. It's been 3 years in a row, and Feather has come up with another one to add to the bull sale! The past two years, she has produced the high selling fullblood bulls. One to Crossroad Farms, and last years to Dwayne Patterson! Here she is again with this wonderful Elliot son. To no surprise, she has birthed a set of twins on the first day of January! The pedigree in this one shows what years of great breeding within the industry will accomplish. Back to the great Romano, Jeremiah and the fact he is off of our favourite fullblood herd sire Elliot, I think this is a match made in heaven. 82 lb birthweight, great pigmentation, and a great hair coat on this one. He is moderate framed, super unique, and should be very valuable when those calves start to drop.



RLD 49F - DAM OF LOT 35

35. BRSF FB ELLIOTT 29K **

HORNED FULLBLOOD | JAN 4, 2022 | 1407267 | BRSF 29K

36. BRSF FB ELLIOTT 129K **

HORNED FULLBLOOD | JAN 25, 2022 | 1407324 | BRSF 129K

BDJL FF ZORRO
R-FIVE ELLIOTT 15E
R-FIVE BEVERLEY 81B

ROOINIK
BDJL LEGEND'S REPLICA
VIRGINIA FINEWINE 289X
R-FIVE PENNY

SBSF IRONMAN 29B
DOUBLE BAR D FEATHER 49F
DOUBLE BAR D FEATHER 147A

IPU ROMANO 90X
WXR MS PASO 26P
MFI JEREMIAH 9022
DOUBLE BAR D FEATHER 43W

BDJL FF ZORRO
R-FIVE ELLIOTT 15E
R-FIVE BEVERLEY 81B

ROOINIK
BDJL LEGEND'S REPLICA
VIRGINIA FINEWINE 289X
R-FIVE PENNY

SOUTHSEVEN MR ADONIS 96Z
M&S MS STUEY 15C
M&S MS 24A

BLCC MR ADONIS 30X
SOUTH SEVEN MISS 70S
M&S MR METRO 2Y
M&S MISS SHAW 27U

BW	WW	YW	CE	BW	WW	YW	MWW	MCE	MILK
82	800	1285	8	2.7	71.6	100.8	68.9	5.7	33.1

BW	WW	YW	CE	BW	WW	YW	MWW	MCE	MILK
94	820	1305	7.4	4.3	75.1	109.6	71.3	5.5	33.7

NON-DILUTER. If you ask dad, he will say that this is the one fullblood he would pick out the pen 9/10 times. He loves the cow on this one and loves the dark colour and pigment. The 15C cow is a remarkable female who really does a nice job on her calves. Her utter is one I consider to be the best in the Fullbloods and with Adonis and Metro in her blood, it makes a whole lot of sense. He is moderate in his makeup, but has great structure and flex in his pasterns. A type of calf that will make some really sought-after females and put the maternal strengths to work! If your needing one with all the bells and whistles, come and evaluate him for yourself.



BRSF 19G - FULL SIB TO LOT 36

lot
36

lot
37



NON-DILUTER. A fancy one here folks! Off a great young female from the Antrim program in Manitoba. We purchased a few from them a few years ago in the search for some great polled genetics. Her calf sold last year to Westbound Ranch at Cadogan! A nice birthweight and weaning weight plus the added genetics of polled make for an exciting opportunity.

37. BRSF FB ELLIOTT 123K **

SCURRED FULLBLOOD | JAN 24, 2022 | 1407313 | BRSF 123K

BDJL FF ZORRO
R-FIVE ELLIOTT 15E
R-FIVE BEVERLEY 81B

BLACK GOLD TAQA 124D
ANTRIM GEMMA 23G
ANTRIM MS POL 26Y

ROONIK
BDJL LEGEND'S REPLICA
VIRGINIA FINEWINE 289X
R-FIVE PENNY

STARWEST BRYCK
MS BGS POLL HILLORY 24W
RIVERBANK MS POL 48S
ANTRIM MISS RED RIVER 14U

38. BRSF FB APACHE JUNCTION 49K **

HORNED FULLBLOOD | JAN 7, 2022 | 1407020 | BRSF 49K

FSS DANZER
JB CDN APACHE JUNCTION 183I
JB CDN FELICITY 1603

G-SEVEN POL ROCKET 12P
G-SEVEN MISS 49U
BAR 5 MS DETROIT 820H

PANZER
FSS BOLCKOW
JB CDN ULTOR 1405
JB CDN FIESTA 1491

IROC ROCKET 57K
G-SEVEN MISS 2L
SU DETROIT RED 803D
MISS GTC BARON 69B

BW	WW	YW	CE	BW	WW	YW	MWW	MCE	MILK	BW	WW	YW	CE	BW	WW	YW	MWW	MCE	MILK
89	795	1300	5.6	4.6	75.5	109.5	71.7	6.3	33.9	92	885	1395	6.9	5.9	80.5	117.2	86.1	5.8	45.8

NON-DILUTER. A couple years ago when we were deciding what to flush 49U to, I came up with the idea of using Apache Junction. We didn't get too many embryos since she was only offering us 4 or 5 eggs per IVF flush. This guy and the 2 females in the replacement are some of the coolest calves to date. They have the colour, pigment, style, and hair that we all breed for. They have tons of capacity, no problem getting across acres, and have some intense shoes to fill considering she is now deceased. 49K had a hard-working recipe cow, whom was pretty much the same size of by the time we weaned this fall. If you're into EPD's, you will notice he is in the top 1% for Milk, and MWWT! A great WW of 885, diluter free, use him on your black cows. Parentage verified. The work is all done, you just need to pick which females to put him with.



lot
38



JB CDN APACHE JUNCTION - SIRE OF LOT 38

lot
39



Non-Diluter. A cool polled calf here with some performance. This one comes from the great Cracker cow family that came from the great herd at Diamond J. The diamond J program has had a lot of influence in the red and fullblood portion of our herd after our acquirement of their bred heifer group many years ago, whom there is still a few of those original cows kicking around and they are W's. His grandma needs no introduction considering she raised a \$21,000 bull calf that went to the popular Oakview Simmental program in Manitoba. The dam is off of Elliot which would be a Paternal sib to the other Fullbloods in the sale. One thing for sure about those females are the utter quality and formation. A lighter 85 lb BW and a respectable WW, I think this one holds tons of value! He has great structure and the polled factor only makes the deal that much better.



BRSF 827F - MATERNAL SIB TO LOT 39

39. BRSF PFB JUSTICE 141K **
POLLED FULLBLOOD | FEB 1, 2022 | 1407344 | BRSF 141K

ANCHOR D OUTLOOK
ZSL MR JUSTICE 111H
ZSL MISS VALUE 156F

VIRGINIA PRECISION 16C
ANCHOR D KAEL 255C
LRX TOTAL VALUE 141C
ZSL MISS SPUR 133B

R-FIVE ELLIOTT 15E
BRSF FB LADY CRACKER 80G
BLUSHROSE CRACKER 50B

BDJL FF ZORRO
R-FIVE BEVERLEY 81B
ANCHOR D TRUE GRIT 520Y
DIAMOND J CRACKER 41U

BW	WW	YW	CE	BW	WW	YW	MWW	MCE	MILK
85	780	1385	7	3.3	68.5	102.2	68.8	4	34.5



ZSL 111H - SIRE OF LOT 39

Bull	Cow	Resulting Progeny
HOMO POLLED	Homo Polled	100% Polled
	Hetero Polled	100% Polled
	Horned	100% Polled

Bull	Cow	Resulting Progeny
HETERO POLLED	Homo Polled	100% Polled
	Hetero Polled	75% Polled, 25% Horned
	Horned	50% Polled, 50% Horned

Bull	Cow	Resulting Progeny
HOMO BLACK	Homo Black	100% Black
	Hetero Black	100% Black
	Red	100% Black

Bull	Cow	Resulting Progeny
HETERO BLACK	Homo Black	100% Black
	Hetero Black	75% Black, 25% Red
	Red	50% Black, 50% Red

NON-DILUTER – This individual does not carry the diluter gene and therefore will not pass on the diluter gene to his progeny. Example: A non-diluter bull mated to a black cow won't have a gray calf. Will either be red or black.



BRSF FB STONE 150J

**

HORNED FULLBLOOD | FEB 13, 2021 | 1372079 | BRSF 150J

40

R-FIVE SAMPSON 43Y
STONE MR RAD RASCAL 207E
STONE MS LOVE 207B

ANCHOR D TRUE GRIT 520Y
BRSF LADY ALEXIS 70C
G-SEVEN MISS 49U

HEMR SAMURAI 7S
R-FIVE SABRINA 74S
ANCHOR D NARCISSUS 105N
STONE MISS. PASSION 69Y
ANCHOR D VENOM 111W
ANCHOR D AEGINA 52L
G-SEVEN POL ROCKET 12P
BAR 5 MS DETROIT 820H

NON-DILUTER. Not sure what happened last year but somehow, I missed 150J in the catalogue! What a terrible mistake on my part but what a unique and special bull to add to this year's offering. He is off of the great 70C cow that comes from the best fullblood cow to walk BRSF in my lifetime. 49U was a herd matron who we flushed prior to her death last year. She added so many things to our operation and really kicked things up and was like a rocket ship. He is off of the Stone bull that we ran for multiple years and have really been impressed with foot structure, and overall shape. Looking and studying through his pedigree, you will notice some of the greatest bloodlines in the Simmental breed to date. Samurai, Narcissus, True Grit, and Pol Rocket, I think this is a no brainer decision. Little extra age on this guy, he will cover a great deal of females this spring or summer, reach those bigger cows, and add some cow family attributes.

BW	WW	JAN 15	CE	BW	WW	YW	MWW	MCE	MILK
87	680	1750	8.9	4.2	58.8	86	68.1	5.4	38.7



STONE MR RAD RASCAL 207E - SIRE OF LOT 40



BRSF 150J - LOT 40

lot
41



HETERO POLLED. HETERO BLACK. A long yearling may born black baldy that should breed a ton of cows this spring! He is a wonderful baldy bull that has depth, tons of thickness, and some good frame to him. He goes back to the great Shalimar cow family and off of a Recoil female. We decided to breed some of the spring calving cows to Elliot, who combines the very best red, black, and fullblood genetics that we have. We like that cross and the fact we can "cross breed" within the Simmental breed. The foot structure on this one is outstanding and I think he will be a very reliable and desirable herdbull!

41. BRSF BS ELLIOTT 520J **

POLLED PUREBRED BLACK | MAY 15, 2021 | 1418107 | BRSF 520J

42. BRSF BS ELLIOTT 830J **

POLLED PUREBRED BLACK | MAY 15, 2021 | 1407354 | BRSF 830J

BDJL FF ZORRO
R-FIVE ELLIOTT 15E
R-FIVE BEVERLEY 81B

NUG RECOIL 272Y
BRSF LADY SHALIMAR 52C
LFE BS SHALIMAR 173X

ROONIK
BDJL LEGEND'S REPLICA
VIRGINIA FINEWINE 289X
R-FIVE PENNY

IPU 52N ACCELERATOR 222U
NUG SHERRY 686S
MR NLC SUPERIOR S6018
LFE BS SHALIMAR 154T

BDJL FF ZORRO
R-FIVE ELLIOTT 15E
R-FIVE BEVERLEY 81B

MUIRHEADS STOUT 105X
DRD 83C
SIMMENTAL X SIMMENTAL

ROONIK
BDJL LEGEND'S REPLICA
VIRGINIA FINEWINE 289X
R-FIVE PENNY

WHEATLAND BULL 680S
MUIRHEADS VELVET 27S

BW	WW	JAN 15	CE	BW	WW	YW	MWW	MCE	MILK
90	780	1820	6.8	4.1	76.7	111.3	65.1	4.4	26.7

BW	WW	JAN 15	CE	BW	WW	YW	MWW	MCE	MILK
94	700	1800	9.7	1.7	71.6	107.7	63.7	6.5	27.9

HETERO POLLED. HETERO BLACK. Another black Elliot son that is off of a commercial cow! Just because he's registered as a half blood, he is more of a 3/4 blood in reality. When they are born this cool and stand out as calves, it's sometimes hard to steer them, why not keep a few of the good ones! He will add some size to those really moderate cows, and again be able to breed a large portion of cows. He has many characteristics that always work.



lot
42



BRSF BS BOMBER 183J

** POLLED PUREBRED BLACK | MAR 13, 2021 | 1372271 | BRSF 183J

43

SVS BROOKS 669D
MOES CAR BOMB 616G
MOES SMART BOMB 616B

MADER IMPULSE 324D
BRSF LADY COFFEE 103G
KHG BLACK COFFEE 155D

MRL RED WHISKEY 101B
SVS RED SARA 92X
WFL MR WESTWAY 10Z
MOES SALSA BOMB 615U
LFE THE RIDDLER 323B
MADER HONEY POT 107A
RKTS COLOSSUS 11A
KHG CARAMEL 18X

HOMO POLLED. HOMO BLACK. The story behind this guy was he was supposed to be in last year's sale, unfortunately he ended up getting an abscess on his neck two falls ago and therefore we decided to hold off selling him. He is one super thick individual who should add tons of thickness. Raising steers with one gets me really excited. His dam is a great Impulse daughter who is set to calve again any day now. She is your typical broody female who puts her head down and goes to work consistently. This will be the last year to acquire any Moes Carbomb sons since he went down breeding two years ago. The daughters calving now are ones to get excited about and it's unfortunate it ended the way it did. Nice birthweight on this March born long yearling, what an opportunity to get some size, and breed every cow in the pen without worry!

BW	WW	JAN 15	CE	BW	WW	YW	MWW	MCE	MILK
88	720	1760	6.6	3.2	83.3	124.8	67.8	3.1	26.1



MOES CAR BOMB 616G - SIRE OF LOT 43



MADER IMPULSE 324D - MATERNAL GRANDSIRE OF LOT 43

reference SIREs

NUG MIDLAND

POLLED PUREBRED | JAN 10, 2020 | 1309981 | NUG 229H

R1

BW	205D	365D	CE	BW	WW	YW	MWW	MCE	MILK
90	826	1412	9.0	2.5	82.8	127.1	64.0	2.8	22.6



STONE MR RAD RASCAL 207E

HORNED FULLBLOOD | JAN 12, 2017 | 1215354 | BSSR 207E

R2

BW	205D	365D	CE	BW	WW	YW	MWW	MCE	MILK
94	785	1377	9.0	5.0	62.5	93.8	71.3	3.7	40.0



RST FREADEY 16F

POLLED PUREBRED | JAN 16, 2018 | PG1262969 | RST 16F

R3

BW	205D	365D	CE	BW	WW	YW	MWW	MCE	MILK
86	850	n/a	9.5	0.7	80.1	122.4	68.2	5.0	28.1



R-FIVE ELLIOT 15E

HORNED FULLBLOOD | JAN 4, 2017 | 1215686 | MAJA 15E

R4

BW	205D	365D	CE	BW	WW	YW	MWW	MCE	MILK
92	793	1409	7.8	3.5	77.0	112.0	72.6	6.6	34.1



RF JAGUAR 054H

POLLED PUREBRED | JAN 7, 2020 | 1316060 | GNR 54H

R5

BW	205D	365D	CE	BW	WW	YW	MWW	MCE	MILK
76	787	1395	10.5	2.4	94.4	136.1	71.2	5.0	24.0



WE'VE BEEN AT THIS A WHILE....

here's some proof!



NEW SALE DATE!

1:30, Thursday March 2, 2023

AT THE FARM, UNITY, SASKATCHEWAN





Jim Pattison Children's Hospital Fundraiser

On December 3, 2022, our three-month-old daughter, Kylie, had to go by an Air Ambulance plane to Jim Pattison Children's Hospital. She was fighting a virus that turned into pneumonia. Kylie spent 10 days in JPCH before she was able to go home. The care we received from Air Ambulance, all the nurses, doctors and specialists from JPCH, and staff at Unity Hospital was exceptional, and we can't thank them enough. To help giveback, we would like to raise money for Air Ambulance and Jim Pattison Children Hospital. There are a few auction items to bid on with 100% of the proceeds going to Air Ambulance and JPCH. We would like to extend a huge thank you to those who have donated items for auction. Boyd & Karri Rissling (RisRock Ag Services), Syngenta Canada (Tracey David), and Blushrose. As well as those who will be bidding on these items.

Cody & Kelsey Belliveau



DONATION LOTS

\$10 buys you 1 ticket (ex. \$100 buys you 10 tickets)



RISROCK AG SERVICES INC. ROCKHAVEN SASKATCHEWAN

Boyd & Kari Risling (306)398-3775 or (306)843-7109

2 bags of Pioneer Canola Seed Treated with Lumiderm – Valued at \$1800

(Successful Bidder will receive choice of seed variety pending availability at time of booking.)



SYNGENTA CANADA

Tracy David (403)441-3901

Miravis Neo Fungicide – Valued at \$3500



BLUSHROSE SIMMENTAL FARM

(306) 228-7056

4 bags of Grazing Corn Seed (from RisRock Ag Services) – Valued at \$1200

Quilt – Made by Momma Heather



EPD TERMS DEFINED BY THE CANADIAN SIMMENTAL ASSOCIATION

CE - CALVING EASE The ease with which a bull's calves are born to first calf heifers. A first calf heifer is defined as a female calving for the first time at 33 months of age or less. EPDs are reported as the expected difference in unassisted calvings. When comparing calving ease EPDs of two sires, the larger EPD indicates a higher percent of unassisted births for calves sired by this bull.

BW - BIRTH WEIGHT Calf weight at birth adjusted to a mature dam equivalent. Expected progeny performance is reported in pounds. The EPD value predicts the difference in average birth weight of a bull's calves, compared to calves of all other bulls evaluated. When comparing the birth weight EPDs of two sires, the larger EPD indicates a heavier average birth weight for calves sired by this bull.

WW - WEANING WEIGHT Calf weight taken between 160 and 250 days of age and adjusted to 205 days of age and a mature dam equivalent. Expected progeny performance is reported in pounds. The EPD value predicts the difference in average 205-day weight of an animal's calves compared to calves of all other animals evaluated. When comparing the weaning weight EPDs of two sires, the larger EPD indicates a heavier average weaning weight for calves sired by this bull.

YW - YEARLING WEIGHT Weight taken between 330 and 440 days of age and adjusted to 365 days of age and a mature dam equivalent. Expected progeny performance is reported in pounds. The EPD value predicts the difference in average 365-day weight of an animal's progeny, compared to the progeny of all other animals evaluated. When comparing the yearling weight EPDs of two sires, the larger EPD indicates a heavier average yearling weight for calves sired by this bull.

MWW - MATERNAL WEANING WEIGHT The weaning weight of an animal's daughters' calves. Expected progeny performance is reported in pounds. The EPD value predicts the difference in average 205-day weight of an animal's daughters' calves compared to calves from daughters of all other animals evaluated. The evaluation reflects both the maternal ability of an animal's daughters and the growth potential of their calves. When comparing maternal weaning weight EPDs of two sires, the larger maternal weaning weight EPD indicates heavier weights due to daughters' ability to produce heavier calves

MCE - MATERNAL CALVING EASE The ease with which a sire's daughters calve as first calf heifers. A first calf heifer is defined as a female calving for the first time at 33 months of age or less. Expected progeny differences are reported as the difference in % unassisted calving's. When comparing the maternal calving ease EPDs of two sires, the larger EPD indicates a higher percentage of unassisted births for calves born to this sire's daughters. Maternal Calving Ease = 1/2 of the CE EPD + Maternal Calving Ease.

MILK - MATERNAL MILK The maternal ability of an animal's daughters. Expected progeny performance is reported in pounds of calf weaning weight. The EPD value predicts the difference (due to maternal ability) in average 205-day weight of an animal's daughters' calves, compared to calves of daughters of all other evaluated animals. When comparing the maternal milk EPDs of two sires, the larger maternal milk EPD indicates heavier average weaning weights due to the daughters' greater maternal ability.

EPD BREED AVERAGES CE 7.2 BW 3.7 WW 75.9 YW 111.7 MWW 66.2 MCE 4.0 MILK 66.2

Blushrose Simmental Farm
Box 1672, Unity, SK S0K 4L0



Time Sensitive Material



If you no longer wish to receive a catalogue, please email blushrose17@gmail.com

Thank you to our 2022 buyers

Lakeview Colony
Scott Colony
Dwayne Patterson
Brayden Bertoia
Kuzio Farms
Prairie Hill Farms
Tyler Mapletoft
Ferme Bilodeau
Curtis & Ed Jacula
Kevin Liebaert
Tyrell Laing
Diamond J Simmentals
White Way Farms
Shayson Simmentals
Westbound Ranch LTD.
Dustin Meyers
Ferme Sebastien Giguere
L&D Balog Farms Ltd
Mike Cholin
David Urschel
Double oo Farms
DRD Flasch Livestock
Marty & Judy Del Frari
Felix Smyl
Moonshine Valley Cattle Co.
TJ Simmentals